

J. P. MACLEOD, Tain

396. FAR OVER STRUY

Musical score for 'Far Over Struy' by J. P. Macleod. The score is written in 2/4 time and consists of four staves of music. The melody is characterized by a series of eighth and sixteenth notes, often beamed together, creating a rhythmic and melodic pattern typical of Scottish bagpipe tunes. The key signature is one flat (B-flat).

397. THE GREEN HILLS OF TYROL

PIPE MAJOR J. MACLEOD

Musical score for 'The Green Hills of Tyrol' by Pipe Major J. Macleod. The score is written in 2/4 time and consists of two staves of music. The melody features a mix of eighth and sixteenth notes, with some triplet-like groupings. The key signature is one flat (B-flat).

THE GREEN HILLS OF TYROL (cont.)

Two staves of musical notation in treble clef. The first staff begins with a double bar line and a repeat sign. The music consists of eighth and sixteenth notes, with some beamed sixteenth notes. The second staff continues the melody and ends with a double bar line.

397a. THE GREEN HILLS OF TYROL

SECONDS

Four staves of musical notation in treble clef, 3/4 time signature. The first staff begins with a double bar line and a repeat sign. The music consists of eighth and sixteenth notes, with some beamed sixteenth notes. The second staff continues the melody. The third and fourth staves continue the piece, with the fourth staff ending with a double bar line.

411. WHEN THE BATTLE IS OVER

PIPE MAJOR W. ROBB

Musical score for 'When the Battle is Over' in 3/4 time, featuring four staves of music. The melody is written on the top staff, and the accompaniment is written on the three lower staves. The music consists of eighth and sixteenth notes, with a key signature of one flat (B-flat).

412. YOUGHAL HARBOUR

Musical score for 'Youghal Harbour' in 3/4 time, featuring four staves of music. The melody is written on the top staff, and the accompaniment is written on the three lower staves. The music consists of eighth and sixteenth notes, with a key signature of one flat (B-flat).

KILWORTH HILLS (cont.)

Musical score for Kilworth Hills (cont.), consisting of four staves of music. The notation is in treble clef and features a complex, rhythmic melody with many sixteenth and thirty-second notes. The piece concludes with a double bar line and repeat dots.

402. LOCHANSIDE

Musical score for Lochanside, consisting of five staves of music. The notation is in treble clef and features a complex, rhythmic melody with many sixteenth and thirty-second notes. The piece begins with a key signature change (one sharp) and a time signature change to 3/4. It concludes with a double bar line and repeat dots.

354. THE HIGH ROAD TO LINTON



366. THE PIPER OF DRUMMOND

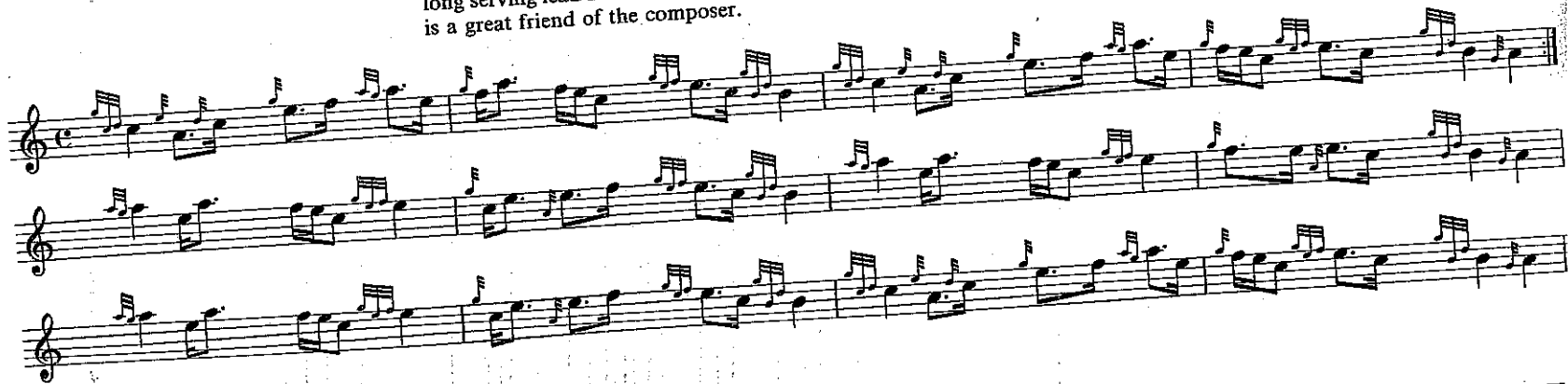
Musical notation for 'The Piper of Drummond', consisting of three staves of music. The first staff begins with a treble clef, a common time signature, and a repeat sign. The melody is written in a single line with eighth and sixteenth notes, including various ornaments. The second and third staves continue the melody with similar notation and ornaments.

305. LOUDON'S BONNY WOODS AND BRAES



64. MOLLY CONNELL

This attractive strathspey was composed in 1978 and dedicated to the wife of the long serving lead drummer or 'tipper' of the Strathclyde Police Pipe Band who is a great friend of the composer.



J. WARK
Strathclyde Police